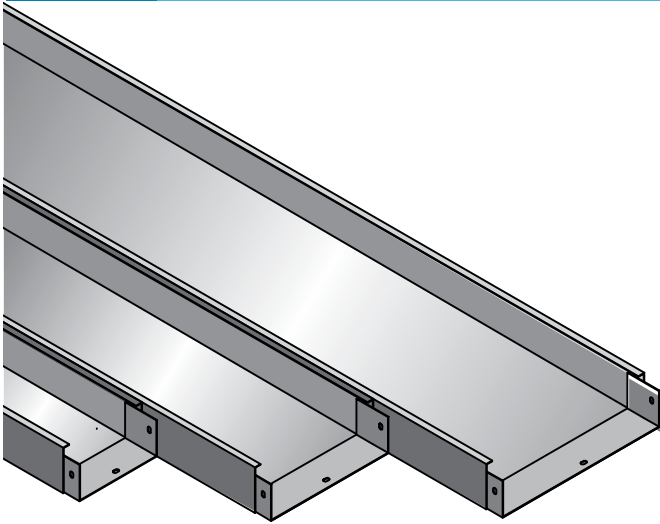


Wireway Type

CABLE TRAY



Description / Application Light Duty METALLIC WIREWAY / General Indoor & Outdoor

Material Selection Hot Roll Mild Steel / Electro Galvanized Steel Sheet (EG)

Deformation Standard NEMA VE-01 Certified

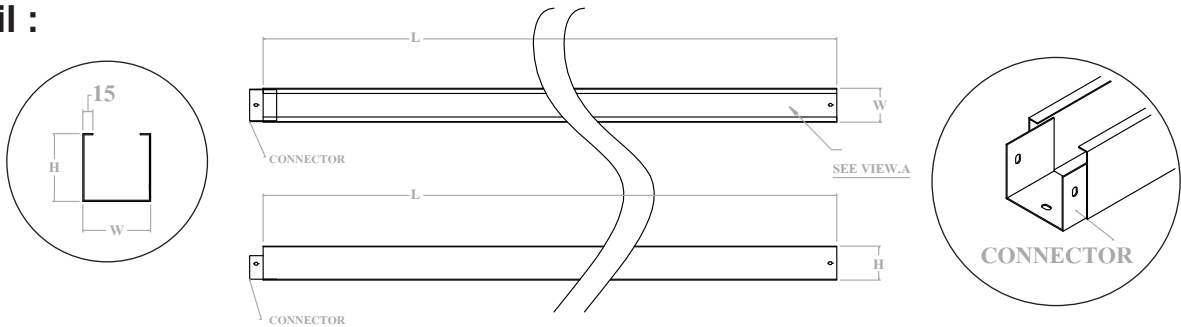
Finishing Standard Epoxy Powder Coating- ASTM D687
Hot Dip Galvanized-ASTM A123

Length (mm.) 2440

Height (mm.) 100

Thickness (mm.) 0.8 | 1.0 | 1.2 | 1.6 | 2.0

Detail :



CODE NO. EPOXY POWDER COATING	CODE NO. HOT DIP GALVANIZED	THICKNESS : MM./ WEIGHT: KG.				
		0.8	1.0	1.2	1.6	2.0
WP 75 X 50 X 2440	WH 75 X 50 X 2440	4.70	5.87	7.04	9.17	11.28
WP 100 X 50 X 2440	WH 100 X 50 X 2440	5.48	6.85	8.22	10.73	13.23
WP 100 X 75 X 2440	WH 100 X 75 X 2440	6.27	7.84	9.41	12.31	15.21
WP 100 X 100 X 2440	WH 100 X 100 X 2440	7.06	8.82	10.58	13.90	17.18
WP 150 X 100 X 2440	WH 150 X 100 X 2440	8.62	10.77	12.92	17.05	21.08
WP 200 X 100 X 2440	WH 200 X 100 X 2440	10.18	12.72	15.26	20.13	24.97
WP 250 X 100 X 2440	WH 250 X 100 X 2440	11.73	14.66	17.59	23.24	28.86
WP 300 X 100 X 2440	WH 300 X 100 X 2440	13.29	16.61	19.93	26.36	32.76
WP 350 X 100 X 2440	WH 350 X 100 X 2440	14.85	18.56	22.27	29.47	36.65
WP 400 X 100 X 2440	WH 400 X 100 X 2440	16.41	20.51	24.61	32.59	40.55
WP 450 X 100 X 2440	WH 450 X 100 X 2440		22.45	26.94	35.70	44.44
WP 500 X 100 X 2440	WH 500 X 100 X 2440		24.40	29.28	38.81	48.33
WP 600 X 100 X 2440	WH 600 X 100 X 2440			33.94	45.04	56.12
WP 700 X 100 X 2440	WH 700 X 100 X 2440			38.63	51.41	63.91
WP 800 X 100 X 2440	WH 800 X 100 X 2440				57.50	71.92
WP 900 X 100 X 2440	WH 900 X 100 X 2440				63.87	79.71

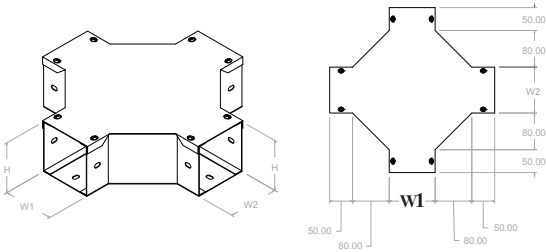
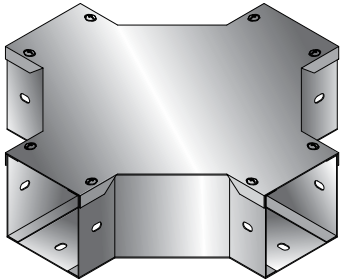
*W = Wireway + COVER , P = Epoxy Powder Coating, H = Hot Dip Galvanized G = Galvanized Sheet

Wireway Type



FITTINGS

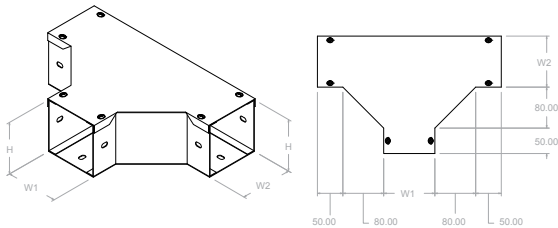
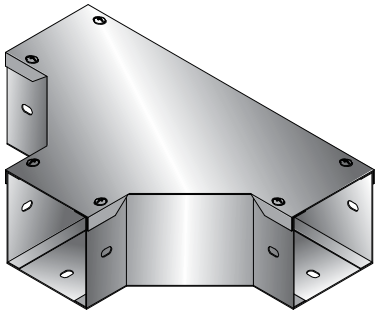
HORIZONTAL CROSS



CODE NO. EPOXY POWDER COATING	CODE NO. HOT DIP GALVANIZED	THICKNESS : MM./ WEIGHT: KG.				
		0.8	1.0	1.2	1.6	2.0
HX-WP 75 X 50	HX-WH 75 X 50	1.81	2.26	2.71	3.60	4.47
HX-WP 100 X 50	HX-WH 100 X 50	2.03	2.54	3.05	4.03	5.02
HX-WP 100 X 75	HX-WH 100 X 75	2.16	2.70	3.24	4.30	5.35
HX-WP 100 X 100	HX-WH 100 X 100	2.30	2.87	3.44	4.56	5.68
HX-WP 150 X 100	HX-WH 150 X 100	2.78	3.47	4.16	5.53	6.89
HX-WP 200 X 100	HX-WH 200 X 100	3.32	4.15	4.98	6.62	8.25
HX-WP 250 X 100	HX-WH 250 X 100	3.93	4.91	5.89	7.84	9.78
HX-WP 300 X 100	HX-WH 300 X 100	4.46	5.57	6.68	9.18	11.46
HX-WP 350 X 100	HX-WH 350 X 100	5.34	6.67	8.00	10.65	13.29
HX-WP 400 X 100	HX-WH 400 X 100	6.14	7.67	9.20	12.25	15.29
HX-WP 450 X 100	HX-WH 450 X 100		8.75	10.50	13.97	17.44
HX-WP 500 X 100	HX-WH 500 X 100		9.90	11.88	15.81	19.75
HX-WP 600 X 100	HX-WH 600 X 100			14.93	19.88	24.83
HX-WP 700 X 100	HX-WH 700 X 100			19.94	24.45	30.55
HX-WP 800 X 100	HX-WH 800 X 100				29.53	36.89
HX-WP 900 X 100	HX-WH 900 X 100				34.54	43.53

*W = Wireway + COVER , P = Epoxy Powder Coating, H = Hot Dip Galvanized G = Galvanized Sheet

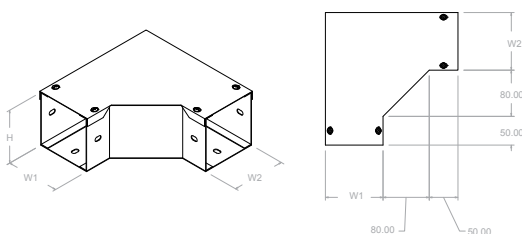
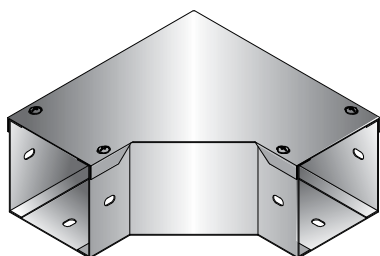
HORIZONTAL TEES



CODE NO. EPOXY POWDER COATING	CODE NO. HOT DIP GALVANIZED	THICKNESS : MM./ WEIGHT: KG.				
		0.8	1.0	1.2	1.6	2.0
HT-WP 75 X 50	HT-WH 75 X 50	1.26	1.57	1.88	2.84	13.08
HT-WP 100 X 50	HT-WH 100 X 50	1.44	1.80	2.16	2.86	3.56
HT-WP 100 X 75	HT-WH 100 X 75	1.57	1.96	2.35	3.11	3.86
HT-WP 100 X 100	HT-WH 100 X 100	1.69	2.11	2.53	3.55	4.17
HT-WP 150 X 100	HT-WH 150 X 100	2.14	2.67	3.20	4.42	5.28
HT-WP 200 X 100	HT-WH 200 X 100	2.64	3.30	3.96	5.26	6.55
HT-WP 250 X 100	HT-WH 250 X 100	3.22	4.02	4.82	6.40	7.97
HT-WP 300 X 100	HT-WH 300 X 100	3.85	4.81	5.77	7.66	9.55
HT-WP 350 X 100	HT-WH 350 X 100	4.54	5.68	6.82	9.06	11.29
HT-WP 400 X 100	HT-WH 400 X 100	5.30	6.63	7.96	10.57	13.19
HT-WP 450 X 100	HT-WH 450 X 100		7.66	9.19	12.22	15.24
HT-WP 500 X 100	HT-WH 500 X 100		8.77	10.52	13.99	17.45
HT-WP 600 X 100	HT-WH 600 X 100			13.17	17.90	22.34
HT-WP 700 X 100	HT-WH 700 X 100			15.81	22.32	27.86
HT-WP 800 X 100	HT-WH 800 X 100				27.24	34.00
HT-WP 900 X 100	HT-WH 900 X 100				32.66	40.78

*W = Wireway + COVER , P = Epoxy Powder Coating, H = Hot Dip Galvanized G = Galvanized Sheet

HORIZONTAL BEND



CODE NO. EPOXY POWDER COATING	CODE NO. HOT DIP GALVANIZED	THICKNESS : MM./ WEIGHT: KG.				
		0.8	1.0	1.2	1.6	2.0
90HB-WP 75 X 50	90HB-WH 75 X 50	0.72	0.90	1.08	1.50	1.88
90HB-WP 100 X 50	90HB-WH 100 X 50	0.81	1.01	1.21	1.68	2.10
90HB-WP 100 X 75	90HB-WH 100 X 75	0.96	1.20	1.44	2.01	2.51
90HB-WP 100 X 100	90HB-WH 100 X 100	1.13	1.41	1.69	2.36	2.95
90HB-WP 150 X 100	90HB-WH 150 X 100	1.34	1.68	2.02	2.79	3.84
90HB-WP 200 X 100	90HB-WH 200 X 100	1.55	1.94	2.33	3.21	4.01
90HB-WP 250 X 100	90HB-WH 250 X 100	1.77	2.21	2.65	3.63	4.54
90HB-WP 300 X 100	90HB-WH 300 X 100	1.98	2.47	2.96	4.06	5.07
90HB-WP 350 X 100	90HB-WH 350 X 100	2.19	2.74	3.29	4.48	5.60
90HB-WP 400 X 100	90HB-WH 400 X 100	2.40	3.00	3.60	4.90	6.13
90HB-WP 450 X 100	90HB-WH 450 X 100		3.27	3.92	5.33	6.66
90HB-WP 500 X 100	90HB-WH 500 X 100		3.53	4.24	5.75	7.19
90HB-WP 600 X 100	90HB-WH 600 X 100			4.88	6.60	8.25
90HB-WP 700 X 100	90HB-WH 700 X 100			5.52	7.45	9.31
90HB-WP 800 X 100	90HB-WH 800 X 100				8.30	10.37
90HB-WP 900 X 100	90HB-WH 900 X 100				9.02	11.43

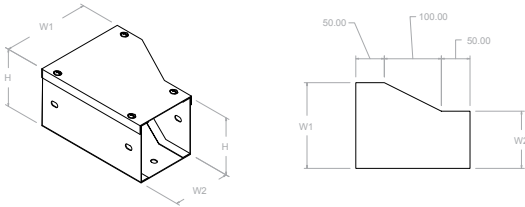
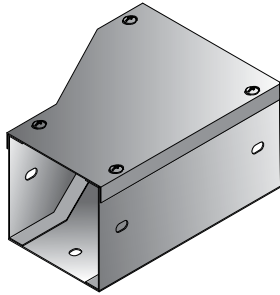
*W = Wireway + COVER , P = Epoxy Powder Coating, H = Hot Dip Galvanized G = Galvanized Sheet

Wireway Type



FITTINGS

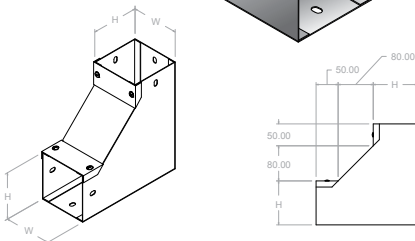
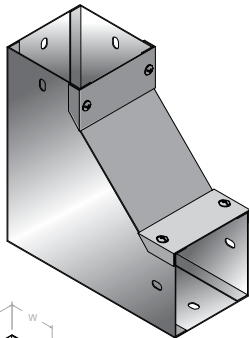
HORIZONTAL REDUCE



CODE NO. EPOXY POWDER COATING	CODE NO. HOT DIP GALVANIZED	THICKNESS : MM./ WEIGHT: KG.				
		0.8	1.0	1.2	1.6	2.0
HR-WP 100 , 75 X 50	HR-WH 100 , 75 X 50	1.02	1.28	1.54	2.03	2.52
HR-WP 150 , 100X 100	HR-WH 150 , 100X 100	1.15	1.44	1.73	2.28	2.84
HR-WP 200 , W2 X 100	HR-WH 200 , W2 X 100	1.27	1.59	1.91	2.53	3.15
HR-WP 250 , W2 X 100	HR-WH 250 , W2 X 100	1.40	1.75	2.10	2.78	3.46
HR-WP 300 , W2 X 100	HR-WH 300 , W2 X 100	1.53	1.91	2.29	3.03	3.78
HR-WP 350 , W2 X 100	HR-WH 350 , W2 X 100	1.65	2.06	2.47	3.29	4.09
HR-WP 400 , W2 X 100	HR-WH 400 , W2 X 100	1.78	2.22	2.66	3.54	4.41
HR-WP450 , W2 X 100	HR-WH 450 , W2 X 100		2.38	2.86	3.79	4.72
HR-WP 500 , W2 X 100	HR-WH 500 , W2 X 100		2.53	3.04	4.04	5.03
HR-WP 600 , W2 X 100	HR-WH 600 , W2 X 100			3.42	4.54	5.66
HR-WP 700 , W2 X 100	HR-WH 700 , W2 X 100			3.79	5.04	6.29
HR-WP 800 , W2 X 100	HR-WH 800 , W2 X 100				5.54	6.93
HR-WP 900 , W2 X 100	HR-WH 900 , W2 X 100				6.03	7.25

*W = Wireway + COVER , P = Epoxy Powder Coating, H = Hot Dip Galvanized G = Galvanized Sheet

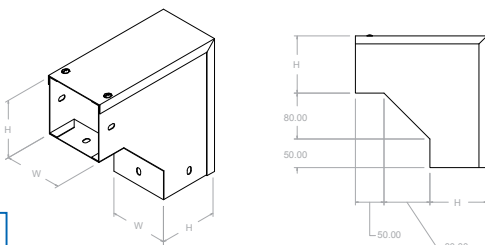
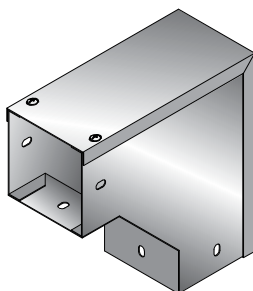
VERTICAL INSIDE



CODE NO. EPOXY POWDER COATING	CODE NO. HOT DIP GALVANIZED	THICKNESS : MM./ WEIGHT: KG.				
		0.8	1.0	1.2	1.6	2.0
90VI-WP 75 X 50	90VI-WH 75 X 50	0.72	0.90	1.08	1.50	1.88
90VI-WP 100 X 50	90VI-WH 100 X 50	0.81	1.01	1.21	1.68	2.10
90VI-WP 100 X 75	90VI-WH 100 X 75	0.96	1.20	1.44	2.01	2.51
90VI-WP 100 X 100	90VI-WH 100 X 100	1.13	1.41	1.69	2.36	2.95
90VI-WP 150 X 100	90VI-WH 150 X 100	1.34	1.68	2.02	2.79	3.84
90VI-WP 200 X 100	90VI-WH 200 X 100	1.55	1.94	2.33	3.21	4.01
90VI-WP 250 X 100	90VI-WH 250 X 100	1.77	2.21	2.65	3.63	4.54
90VI-WP 300 X 100	90VI-WH 300 X 100	1.98	2.47	2.96	4.06	5.07
90VI-WP 350 X 100	90VI-WH 350 X 100	2.19	2.74	3.29	4.48	5.60
90VI-WP 400 X 100	90VI-WH 400 X 100	2.40	3.00	3.60	4.90	6.13
90VI-WP 450 X 100	90VI-WH 450 X 100		3.27	3.92	5.33	6.66
90VI-WP 500 X 100	90VI-WH 500 X 100		3.53	4.24	5.75	7.19
90VI-WP 600 X 100	90VI-WH 600 X 100			4.88	6.60	8.25
90VI-WP 700 X 100	90VI-WH 700 X 100			5.52	7.45	9.31
90VI-WP 800 X 100	90VI-WH 800 X 100				8.30	10.37
90VI-WP 900 X 100	90VI-WH 900 X 100				9.02	11.43

*W = Wireway + COVER , P = Epoxy Powder Coating, H = Hot Dip Galvanized G = Galvanized Sheet

VERTICAL OUTSIDE



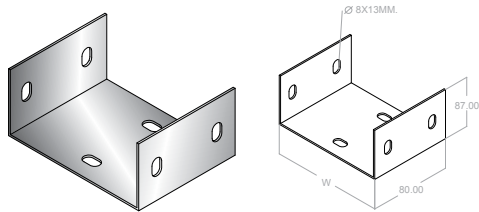
CODE NO. EPOXY POWDER COATING	CODE NO. HOT DIP GALVANIZED	THICKNESS : MM./ WEIGHT: KG.				
		0.8	1.0	1.2	1.6	2.0
90VO-WP 75 X 50	90VO-WH 75 X 50	0.72	0.90	1.08	1.50	1.88
90VO-WP 100 X 50	90VO-WH 100 X 50	0.81	1.01	1.21	1.68	2.10
90VO-WP 100 X 75	90VO-WH 100 X 75	0.96	1.20	1.44	2.01	2.51
90VO-WP 100 X 100	90VO-WH 100 X 100	1.13	1.41	1.69	2.36	2.95
90VO-WP 150 X 100	90VO-WH 150 X 100	1.34	1.68	2.02	2.79	3.84
90VO-WP 200 X 100	90VO-WH 150 X 101	1.55	1.94	2.33	3.21	4.01
90VO-WP 250 X 100	90VO-WH 250 X 100	1.77	2.21	2.65	3.63	4.54
90VO-WP 300 X 100	90VO-WH 300 X 100	1.98	2.47	2.96	4.06	5.07
90VO-WP 350 X 100	90VO-WH 350 X 100	2.19	2.74	3.29	4.48	5.60
90VO-WP 400 X 100	90VO-WH 400 X 100	2.40	3.00	3.60	4.90	6.13
90VO-WP 450 X 100	90VO-WH 450 X 100		3.27	3.92	5.33	6.66
90VO-WP 500 X 100	90VO-WH 500 X 100		3.53	4.24	5.75	7.19
90VO-WP 600 X 100	90VO-WH 600 X 100			4.88	6.60	8.25
90VO-WP 700 X 100	90VO-WH 700 X 100			5.52	7.45	9.31
90VO-WP 800 X 100	90VO-WH 800 X 100				8.30	10.37
90VO-WP 900 X 100	90VO-WH 900 X 100				9.02	11.43

*W = Wireway + COVER , P = Epoxy Powder Coating, H = Hot Dip Galvanized G = Galvanized Sheet

Wireway Type

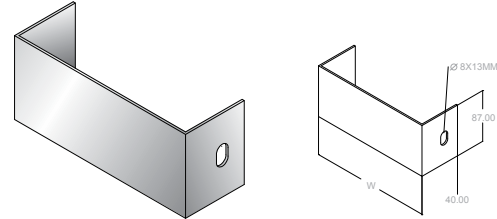
ACCESSORIES

CONNECTOR



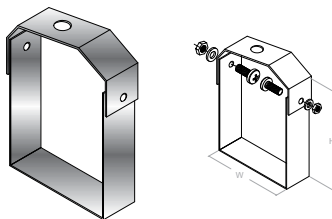
CODE NO. EPOXY POWDER COATING	CODE NO. HOT DIP GALVANIZED	THICKNESS : MM./ WEIGHT: KG.			
		1.0	1.2	1.6	2.0
WC - WP 75 X 50	WC - WH 75 X 50	0.10	0.11	0.18	0.18
WC - WP 100 X 50	WC - WH 100 X 50	0.11	0.13	0.20	0.22
WC - WP 100 X 75	WC - WH 100 X 75	0.12	0.14	0.24	0.25
WC - WP 100 X 100	WC - WH 100 X 100	0.14	0.17	0.28	0.32
WC - WP 150 X 100	WC - WH 150 X 100	0.18	0.22	0.34	0.39
WC - WP 200 X 100	WC - WH 200 X 100	0.21	0.25	0.40	0.47
WC - WP 250 X 100	WC - WH 250 X 100		0.28	0.46	0.54
WC - WP 300 X 100	WC - WH 300 X 100		0.32	0.52	0.63
WC - WP 350 X 100	WC - WH 350 X 100			0.58	0.71
WC - WP 400 X 100	WC - WH 400 X 100			0.64	0.79
WC - WP 450 X 100	WC - WH 450 X 100			0.70	0.82
WC - WP 500 X 100	WC - WH 500 X 100			0.76	0.94
WC - WP 550 X 100	WC - WH 550 X 100			0.82	0.98
WC - WP 600 X 100	WC - WH 600 X 100			0.88	1.10
WC - WP 650 X 100	WC - WH 650 X 100				1.17
WC - WP 700 X 100	WC - WH 700 X 100				1.26
WC - WP 750 X 100	WC - WH 750 X 100				1.33
WC - WP 800 X 100	WC - WH 800 X 100				1.41
WC - WP 850 X 100	WC - WH 850 X 100				1.49
WC - WP 900 X 100	WC - WH 900 X 100				1.57
WC - WP 950 X 100	WC - WH 950 X 100				1.66
WC - WP 1000 X 100	WC - WH 1000 X 100				1.73

END CAP



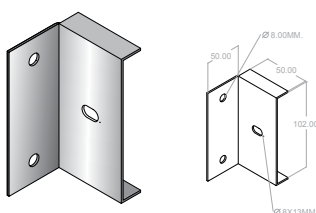
CODE NO. EPOXY POWDER COATING	CODE NO. HOT DIP GALVANIZED	THICKNESS : MM./ WEIGHT: KG.			
		1.0	1.2	1.6	2.0
EC - WP 75 X 50	EC - WH 75 X 50	0.10	0.11	0.18	0.18
EC - WP 100 X 50	EC - WH 100 X 50	0.11	0.13	0.20	0.22
EC - WP 100 X 75	EC - WH 100 X 75	0.12	0.14	0.24	0.25
EC - WP 100 X 100	EC - WH 100 X 100	0.14	0.17	0.28	0.32
EC - WP 150 X 100	EC - WH 150 X 100	0.18	0.22	0.34	0.39
EC - WP 200 X 100	EC - WH 200 X 100	0.21	0.25	0.40	0.47
EC - WP 250 X 100	EC - WH 250 X 100		0.28	0.46	0.54
EC - WP 300 X 100	EC - WH 300 X 100		0.32	0.52	0.63
EC - WP 350 X 100	EC - WH 350 X 100			0.58	0.71
EC - WP 400 X 100	EC - WH 400 X 100			0.64	0.79
EC - WP 450 X 100	EC - WH 450 X 100			0.70	0.82
EC - WP 500 X 100	EC - WH 500 X 100			0.76	0.94
EC - WP 550 X 100	EC - WH 550 X 100			0.82	0.98
EC - WP 600 X 100	EC - WH 600 X 100			0.88	1.10
EC - WP 650 X 100	EC - WH 650 X 100				1.17
EC - WP 700 X 100	EC - WH 700 X 100				1.26
EC - WP 750 X 100	EC - WH 750 X 100				1.33
EC - WP 800 X 100	EC - WH 800 X 100				1.41
EC - WP 850 X 100	EC - WH 850 X 100				1.49
EC - WP 900 X 100	EC - WH 900 X 100				1.57
EC - WP 950 X 100	EC - WH 950 X 100				1.66
EC - WP 1000 X 100	EC - WH 1000 X 100				1.73

HANGER SUPPORT



CODE NO. EPOXY POWDER COATING	CODE NO. HOT DIP GALVANIZED	THICKNESS : MM./ WEIGHT: KG.
		2.0
HS - WP 75 X 50	HS - WH 75 X 50	0.20
HS - WP 100 X 50	HS - WH 100 X 50	0.25
HS - WP 100 X 75	HS - WH 100 X 75	0.30
HS - WP 100 X 100	HS - WH 100 X 100	0.35
HS - WP 150 X 100	HS - WH 150 X 100	0.35
HS - WP 200 X 100	HS - WH 200 X 100	0.45

FLANGE END



CODE NO. EPOXY POWDER COATING	CODE NO. HOT DIP GALVANIZED	THICKNESS : MM./ WEIGHT: KG.
		2.0
HS - WP 75 X 50	HS - WH 75 X 50	0.20
HS - WP 100 X 50	HS - WH 100 X 50	0.25
HS - WP 100 X 75	HS - WH 100 X 75	0.30
HS - WP 100 X 100	HS - WH 100 X 100	0.35
HS - WP 150 X 100	HS - WH 150 X 100	0.35
HS - WP 200 X 100	HS - WH 200 X 100	0.45